

Johnson R-SERIES INSULATED COMPOSITE REACH-IN TRUCK BODY

For last-mile delivery carriers who value safety and flexibility, the Johnson R-Series provides superior thermal efficiency and durability while its lightweight design allows for maximum payload capacity. Available with multi-temperature capabilities and all-electric refrigeration options, this truck body can be customized to meet the unique needs of any number of operations.



KEY FEATURES

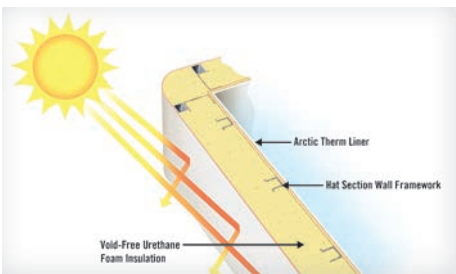


ArcticTherm™ Interior Liner Protection

Our patented ArcticTherm™ interior lining design adds unparalleled strength. The fiberglass-reinforced plastic lining is 10X more puncture resistant than traditional glassboard liners, thus delivering the highest level of durability and thermal performance. The bright white, seamless interior is easy to clean and helps meet FDA food contact requirements.

Multi-Temperature Capabilities

Available with multiple doors per side, the Johnson R-Series can be divided up into frozen, fresh, and ambient temperature zones. All within ergonomic reach and with a single vehicle weight for 10,000 to 26,000 GVWR, making last mile deliveries easy to manage.



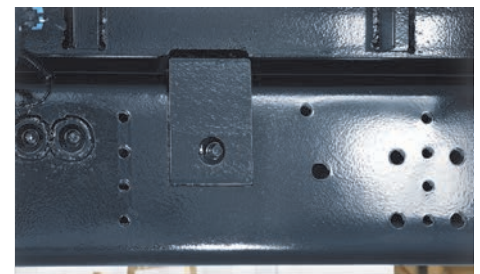
Panel Foaming Technology

Great Dane's high-pressure foam insulation system produces panels with the highest thermal performance rating in the industry. The result is a significant reduction in energy use to keep products at required temperatures.



Seamless Fiberglass Design

The seamless fiberglass exterior is the first barrier against ambient conditions. The formed fiberglass construction doesn't conduct heat, helping to increase thermal efficiency, while also providing a smooth surface for decal applications.



Tie-Down System

The innovative body tie-down system offers secure mounting with reduced maintenance. It eliminates U-bolts, U-bolt maintenance, filler strip compression, rot and kick-out. The tie-down system, coupled with the durability of the Johnson R-Series, allows the truck body to be moved to multiple chassis over time, reducing the total cost of ownership.



Side Door Options

The Johnson R-Series comes with multiple doors on each side of the body. Each opening features clear permanently-mounted strip curtains to help save energy and maintain the temperature-controlled environment. The body is available with options for 2, 3, 4, and 5 doors per side.

Patented Door Handle Design

The custom-engineered automotive-style door handle with cable release latch makes it simple for drivers to open and close compartments. The ergonomic design is smaller and lighter weight than traditional door handles and the polymer construction eliminates corrosion for years of maintenance-free service.

LED Lighting Features

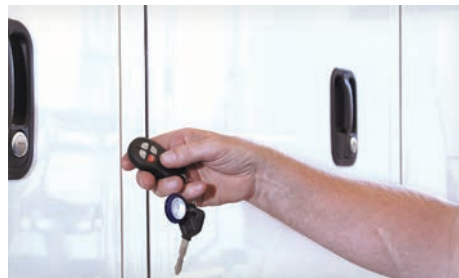
The Johnson R-Series features a variety of LED lighting options. Exterior LED clearance and cluster lights are fully sealed and recess-mounted in the roof radius for impact protection. Optional exterior courtesy lighting helps illuminate the area for enhanced driver safety and visibility.

Additional interior lighting options include dome lamps on the ceiling and strip lights on the door mullions.



Floor Strength

The durable composite truck body floor is constructed with steel cross members that are completely embedded in urethane foam and covered with a composite subpan for maximum structural integrity and thermal performance.



Keyless Locking System

Electronic, automatic door locks that are operated with a key fob and lock all truck body doors and the truck cab with the click of a button. Ideal for helping reduce theft and keeping products secure during the route.



All-Electric Refrigeration System

Significantly reduce operating costs and CO2 emissions with cold plate truck refrigeration. These refrigeration systems provide reliable, all-electric temperature control for a multitude of truck body sizes.

Visit www.greatdane.com to learn more about the Johnson R-Series and Great Dane's full line of trailers, truck bodies and innovations.



Great Dane