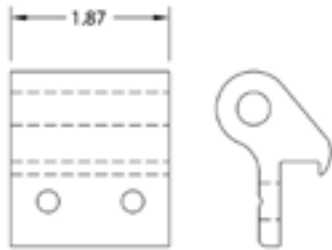


HINGE BUTTS & PINS



Part Number	Style	Finish	Hole Dia.	Inside Width	Height to Hole Center
021-00308	NOTCHED	S/S CAST	.51"	3.00"	1.38"
023-00583		S/S		2.88"	1.75"
023-00586					2.12"
023-00642	STRAIGHT	ZINC		3.25"	1.50"
023-00645	NOTCHED	STEEL		4.25"	1.12"
023-00662		ZINC		2.88"	1.75"
023-00664		STEEL	4.25"	1.38"	
023-00669				3.00"	

Part Number	Style	Finish	Hole Dia.	Inside Width	Height to Hole Center
023-00678	NOTCHED	STEEL	.51"	3.00"	1.63"
16772-SS-01		S/S		4.19"	1.93"
27-5897-S1NB-01					1.25"
29-5897-1N-01	STRAIGHT	STEEL		5.03"	1.31"
43000134				2.66"	
49900203		H.D. GALV		4.25"	1.38"
P1156061					
P1156065					



Part Number	Description
11882	HINGE BUTT ALUM 1.87" SIDE DOOR (GREAT DANE)



GREAT DANE CLASSIC	
Part Number	Description
42502495	HINGE BUTT RECESSED S/S 3.22"
42502667	HINGE BUTT RECESSED STEEL 3.22"



GREAT DANE L/W REAR FRAME	
Part Number	Description
15281	HINGE BUTT 4.75" S/S
16950	HINGE BUTT 4.75"



Part Number	Description
021-00376	HINGE PIN BOLT KIT .50" X 5.50"



HINGE PINS ROUND HEAD			
Part Number	Finish	Length	Diameter
42502605	ZINC	5.00"	.38"
46400	S/S		
997-98022	ZINC	4.00"	.50"



HINGE PINS FLAT HEAD			
Part Number	Finish	Length	Diameter
997-98016	ZINC	4.25"	.63"
997-98017		5.00"	.50"
997-98019		4.45"	.63"
997-98027		4.50"	.50"
P1054123A		5.25"	
P1054143A		S/S	4.00"
P1054147A			